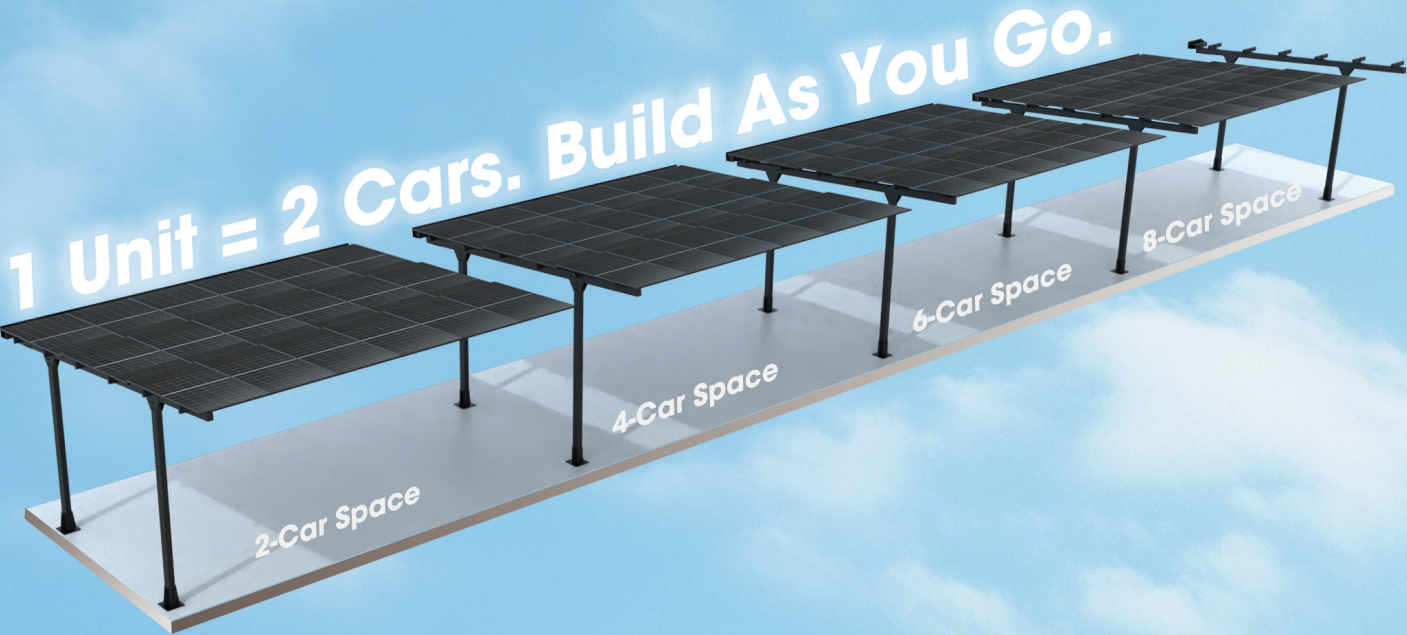


Expand Easily. Two Cars Each Unit.



Certified & Compliant

Complies with local standards  
Certified solar panel system



Modular & Scalable Design

Standardised layout  
Flexible project configurations



Fast Design & Installation

Quick quotation process  
Streamlined onsite setup



Simplified Structural System

No field cutting or welding  
Fewer SKUs, faster logistics



Integrated Waterproof Panels

Overlapping panel system  
Built-in drainage channels



Durable Light Steel Structure

Strong and corrosion-resistant  
Long design service life



Container-Friendly Design

Standard-length parts  
Fit 20ft containers for export



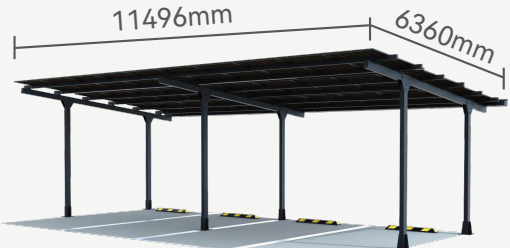
Short Lead Time

Standard production model  
Fast manufacturing and delivery

Carport Specifications

Structural Parameters

Material	Light Steel
Structure System	Modular bolt-connected frame (2-car per unit)
Design Standards	Engineered to Eurocodes Adaptable to National Annexes
Wind Load Capacity	Wind Resistance Tailored to Your Location
Transport	20ft container-ready Compact and export-friendly
Design Life	25 Years



4 Single Side

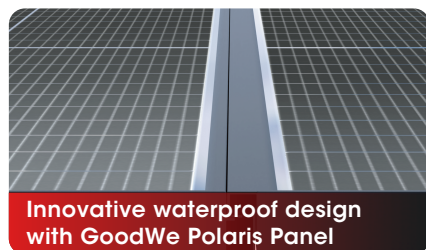


8 Single Side

Car Space	Configuration	System Size	No. of Panels	Structure Width	Total Panel Width
4	Single 4	16.2kW	30	10400mm	11496mm
	Double 4x2	32.4kW	60		
6	Single 6	22.68kW	42	15600mm	16084mm
	Double 6x2	45.36kW	84		
8	Single 8	30.78kW	57	20800mm	21819mm
	Double 8x2	61.56kW	114		
10	Single 10	37.26kW	69	26000mm	26407mm
	Double 10x2	74.52kW	138		
12	Single 12	45.36kW	84	31200mm	32142mm
	Double 12x2	90.72kW	168		



## Structure Details



Innovative waterproof design with GoodWe Polaris Panel



Overlapping installation to prevent water ingress



Under-Panel fixings to enable quicker and safer installation



Bolt-Only connections  
No on-site welding required



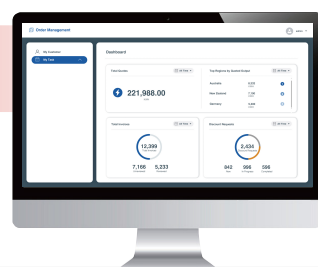
Modular carport frame to simplify design and installation



Integrated water management to suit various site conditions

## Umora – Solar Design & Quotation Platform

Visit [www.umaxenergy.com/orderlink](http://www.umaxenergy.com/orderlink)— everything you need to quote, configure, and manage your solar carport projects, all in one place.



Register Now



### Instant Project Quotation

Generate fast, accurate pricing for modular systems



### Carport Configurator Tool

Design by car spaces, layout, or site constraints



### System Sizing Calculator

Auto-calculate panels, power, and structure sizing



### Logistics & Packing Insights

View shipping volumes, packaging specs, and container fit



### Partner Order Dashboard

Track project status, quotes, and shipments



### Exclusive Market Resources

Access pricing tiers, sales tools, and support materials



LinkedIn



Youtube



Facebook



Instagram



Red Note



GoodWe

Goodwe Australia Pty Ltd.

2/6 Enterprise Drive, Rowville, VIC 3178, Australia

1300-950-868

[carport.pvbm@goodwe.com](mailto:carport.pvbm@goodwe.com)

[info@umaxenergy.com](mailto:info@umaxenergy.com)

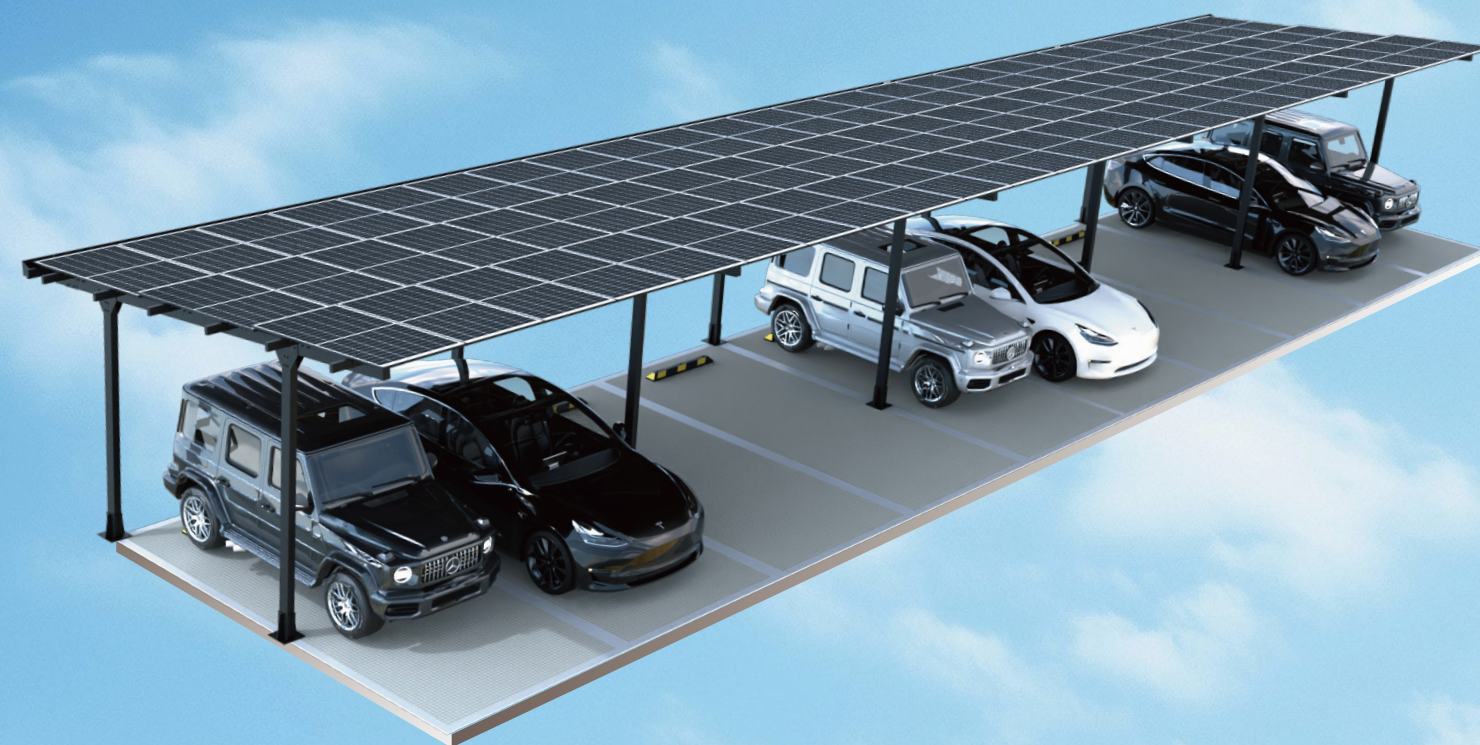
[en.pvbm.com](http://en.pvbm.com)

[www.umaxenergy.com](http://www.umaxenergy.com)

**GOODWE**  
Engineered by UMAX

# Modular Light Steel Commercial Solar Carport

## STRIX SERIES



Sweet Spot of  
Strength, Cost & Durability



Built-In  
Waterproof Design



AI-Ready  
Module Level Monitoring



Compact for  
Shipping & Delivery