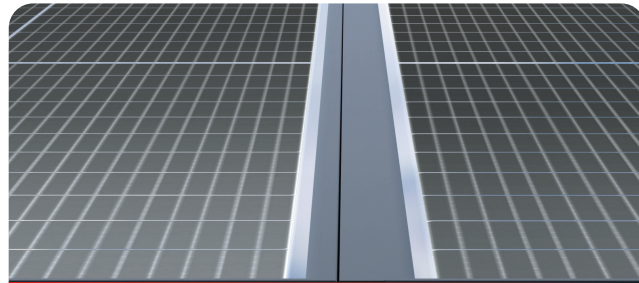
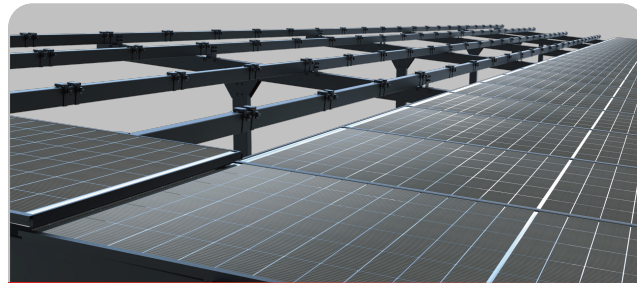


Structure Details



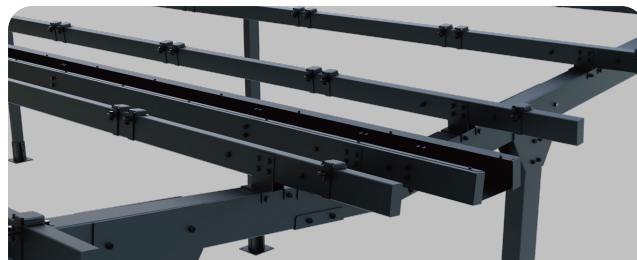
Innovative waterproof design
with GoodWe Polaris Panel



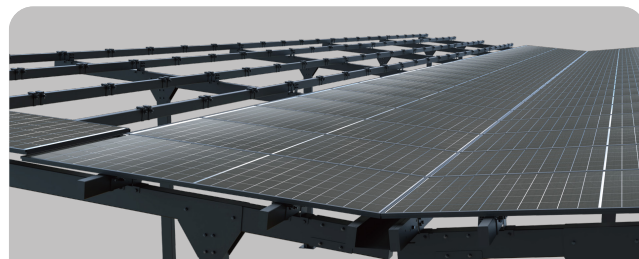
Overlapping installation
to prevent water ingress



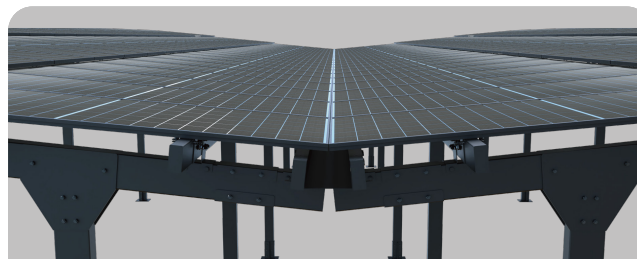
Under-Panel fixings to enable
quicker and safer installation



Bolt-Only connections
No on-site welding required



Modular carport frame to
simplify design and installation



Integrated water management to
suit various site conditions



LinkedIn



Youtube



Facebook



Instagram



Red Note



GoodWe

GOODWE EUROPE GMBH

Kistlerhofstrasse 170, 81379 München, Germany

service.de@goodwe.com

carport.pvbm@goodwe.com

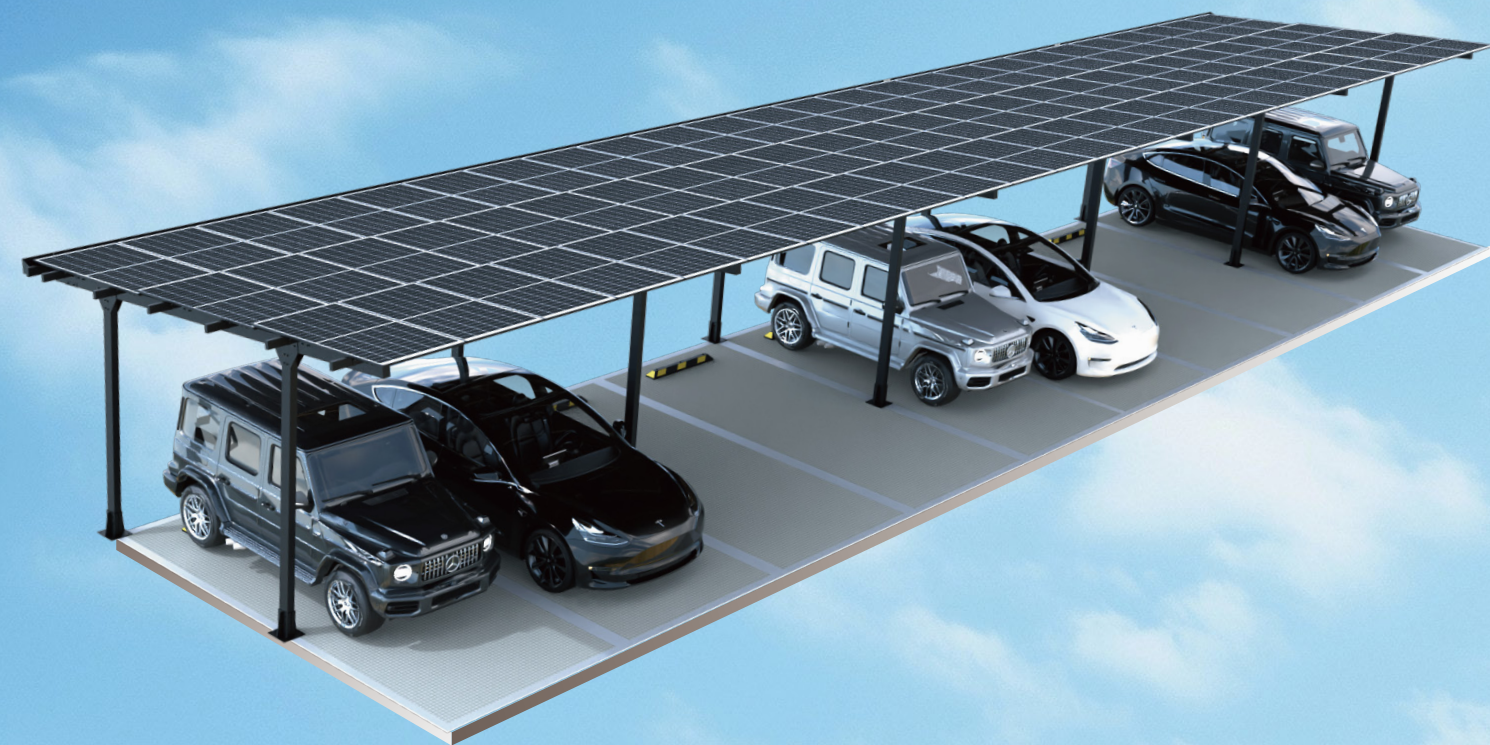
+49 89 7807 289-50

en.pvbm.com

GOODWE

Modular Light Steel Commercial Solar Carport

STRIX SERIES



Sweet Spot of
Strength, Cost & Durability



Built-In
Waterproof Design

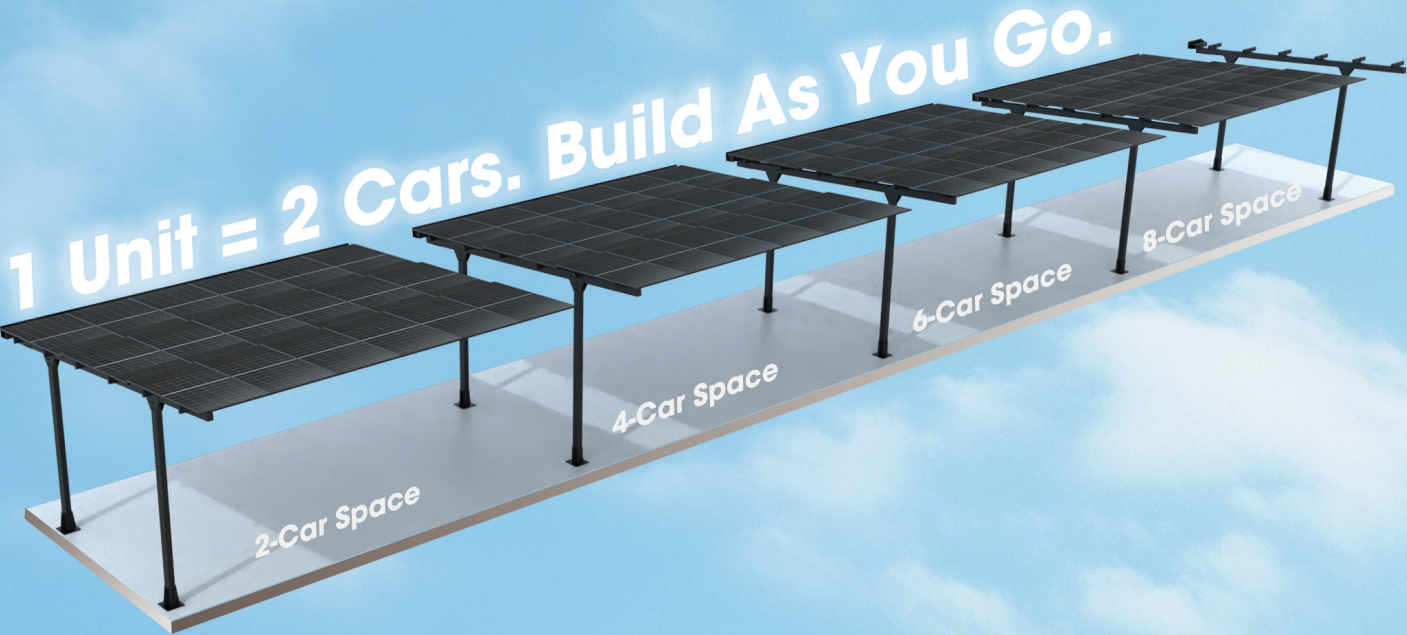


AI-Ready
Module Level Monitoring



Compact for
Shipping & Delivery

Expand Easily. Two Cars Each Unit.



Certified & Compliant

Complies with local standards
Certified solar panel system



Modular & Scalable Design

Standardised layout
Flexible project configurations



Fast Design & Installation

Quick quotation process
Streamlined onsite setup



Simplified Structural System

No field cutting or welding
Fewer SKUs, faster logistics



Integrated Waterproof Panels

Overlapping panel system
Built-in drainage channels



Durable Light Steel Structure

Strong and corrosion-resistant
Long design service life



Container-Friendly Design

Standard-length parts
Fit 20ft containers for export



Short Lead Time

Standard production model
Fast manufacturing and delivery

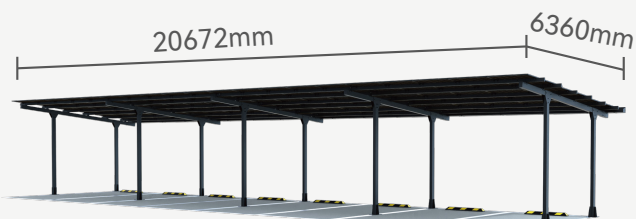
Carport Specifications

Structural Parameters

Material	Light Steel
Structure System	Modular bolt-connected frame (2-car per unit)
Design Standards	Engineered to Eurocodes Adaptable to National Annexes
Wind Load Capacity	Wind Resistance Tailored to Your Location
Transport	20ft container-ready Compact and export-friendly
Design Life	25 Years



4 Single Side



8 Single Side

Car Space	Configuration	System Size	No. of Panels	Structure Width	Total Panel Width
4	Single 4	14.58kW	27	10000mm	10349mm
	Double 4x2	29.16kW	54		
6	Single 6	22.68kW	42	15000mm	16084mm
	Double 6x2	45.36kW	84		
8	Single 8	29.16kW	54	20000mm	20672mm
	Double 8x2	58.32kW	108		
10	Single 10	35.24kW	66	25000mm	25260mm
	Double 10x2	71.28kW	132		
12	Single 12	43.74kW	81	30000mm	30995mm
	Double 12x2	87.48kW	162		