



GOODWE

Shade Within, Solar Beyond

Stellar Series

Born for Building Energy Efficiency

Stellar Series

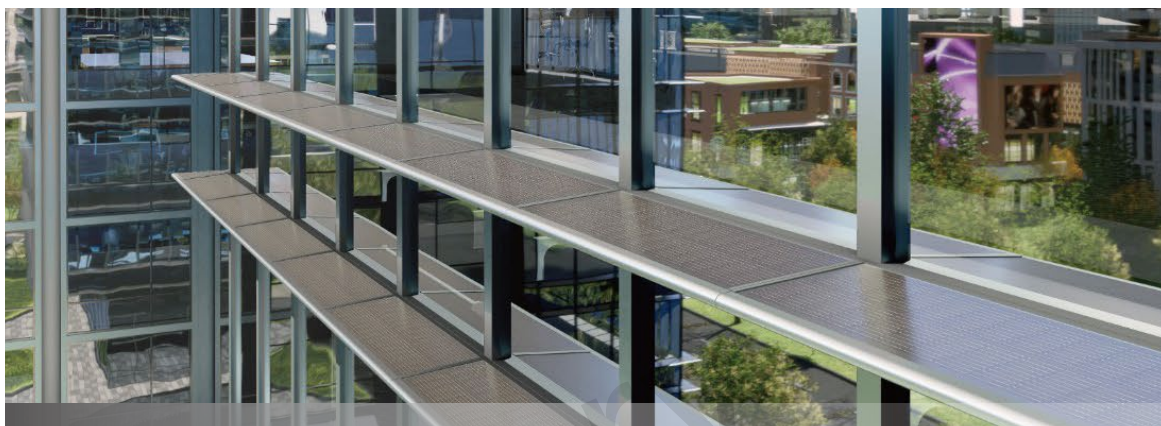
BMW-D2/028A BMW-V1/020A BMW-L2/013A

The Stellar Series revolutionizes traditional architectural shading products by integrating PV cells, providing effective sun shading and generating electricity for buildings to enhance energy efficiency. Comprising three products: Stellar-H (horizontal), Stellar-V (vertical), and Stellar-L (louver) shading, it prioritizes safety, customization, and high-efficiency power generation.

It reduces the cooling system load, ensures a comfortable indoor environment, and seamlessly integrates with various architectural styles. Notably, it boasts premium safety with fire rating and high static load resistance, ensuring sustainability and functionality. The Stellar Series represents the convergence of efficiency, safety, and customization, offering groundbreaking sustainable shading solutions for modern architecture.

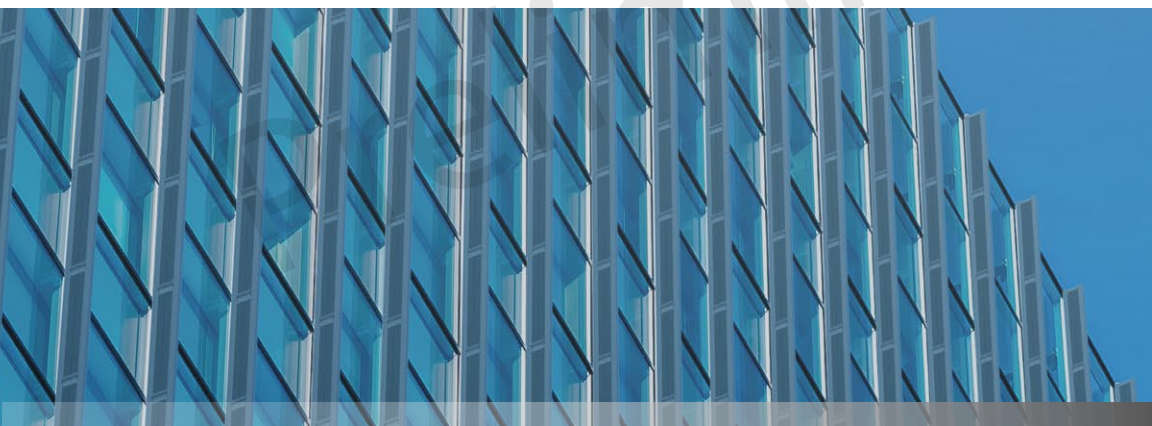
Stellar-H

Cost-Effective Horizontal
PV Shading Product



Stellar-V

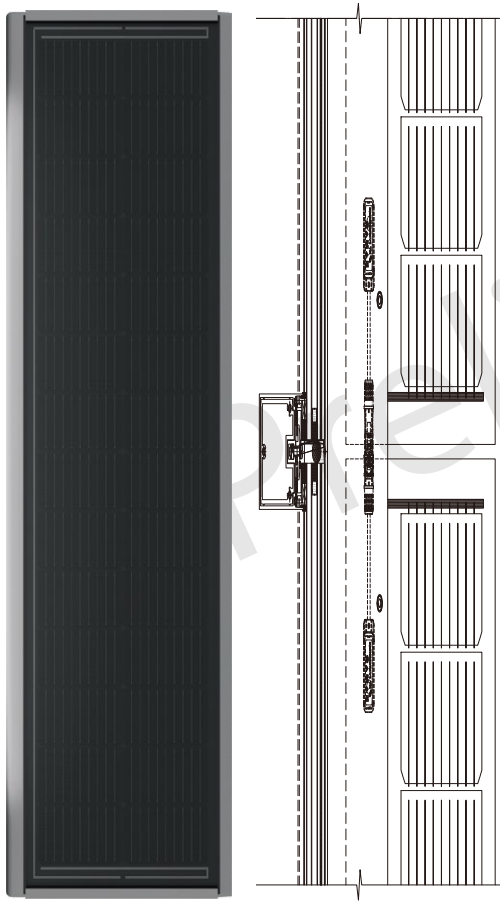
Advanced Vertical
PV Shading Product



Stellar-L

Innovative louver
PV Shading Product





BMW-D2/028A



Efficient Shading and Ventilation



Easy Maintenance Design



Aesthetical Customization



Premium Safety Features

Structural Data

BMW-D2/028A

Size*	1392±2 x 487±2 x 83.6±1 mm
Weight	18.5±0.5kg
Cable	4mm ²
Cell	N-Type Mono Si Half Cells (28pcs)
Connector	MC4 compatible

Load Capacity

Maximum Static Load on the Front	5400Pa
Maximum Static Load on Rear Side	2400Pa

Electrical Data (STC: 1000W/m², 25 °C, AM 1.5)

Power	102W
Power/m ² (W/m ²)	150W/m ²
Voltage at Open Circuit (Voc)	9.50V
Voltage at Max Power (Vmpp)	8.15V
Current at Short Circuit (Isc)	13.35A
Current at Max Power (Impp)	12.52A
Power Sorting Tolerance	0/+3W

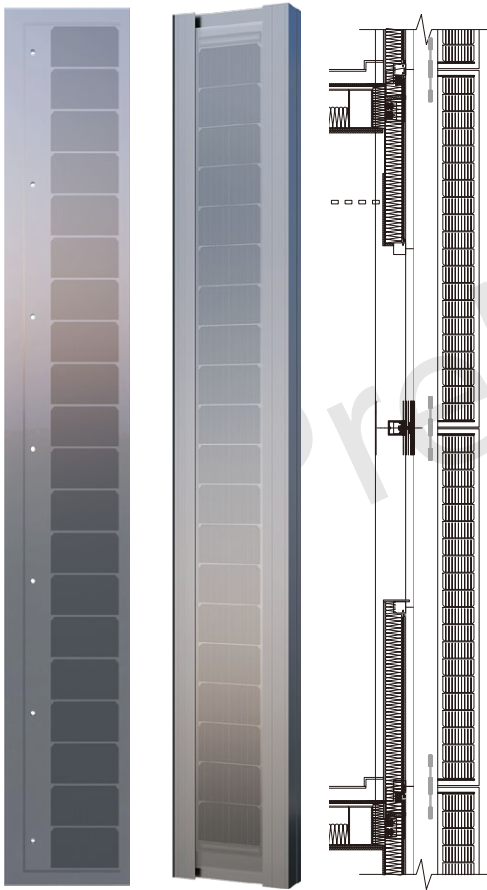
Operation Conditions

Temperature Range	-40°C ~+85°C
Maximum System Voltage	1500V
Maximum Series Fuse Rating	25A
The Rated Operating Temperature	45±2°C
Bifaciality Coefficients	TOPCon: $\phi_{voc}=99\pm1\%$ $\phi_{isc} 80\pm5\%$ $\phi_{pmax}=80\pm5\%$
Fire-resistance Class	A
Protection Class	II

Temperature Coefficient

Isc TP	+ 0.046%/°C
Voc TP	- 0.26%/°C
Pmp TP	- 0.31%/°C

*within a tolerance of 2 mm for length, width and thickness.



BMW-V1/020A



Bifacial Power Generation



Customizable Solutions



Hidden Cable Design



Rapid & Effortless Installation

en.pvbm.com

Structural Data

BMW-V1/020A

Size*	1990±2 x 336±2 x 17±1mm
Weight	29.3±0.5kg
Cable	4mm ²
Cell	N-Type Mono Si Half Cells (20pcs)
Connector	MC4 compatible

Load Capacity

Maximum Static Load on the Front	5400Pa
Maximum Static Load on Rear Side	2400Pa

Electrical Data (STC: 1000W/m², 25 °C, AM 1.5)

Power	73W
Power/m ² (W/m ²)	109W/m ²
Voltage at Open Circuit (Voc)	14.21V
Voltage at Max Power (Vmp)	11.89V
Current at Short Circuit (Isc)	6.40A
Current at Max Power (Imp)	6.14A
Power Sorting Tolerance	0/+3W

Operation Conditions

Temperature Range	-40°C ~+85°C
Maximum System Voltage	1500V
Maximum Series Fuse Rating	25A
The Rated Operating Temperature	45±2°C
Bifaciality Coefficients	TOPCon: φvoc=99±1% φIsc=80±5% φPmax=80±5%
Fire-Resistant Class	A
Protection Class	II

Temperature Coefficient

Isc TP	+ 0.046%/°C
Voc TP	- 0.26%/°C
Pmp TP	- 0.31%/°C

*within a tolerance of 2 mm for length, width and thickness.



Adjustable for Optimal Powering



Premium Safety Features



Efficient Sun Shading



Diverse Application Scenarios

Structural Data

BMW-L2/013A

Louver Type	Fixed Louvers	Motorized Louvers
Size*	1404 *267 *17.5 mm	1404 *317 *17.5 mm
Weight	16.4±0.5Kg	17.2±0.5Kg
Cable	4mm ²	
Cell	N-Type Mono Si Half Cells (13pcs)	
Connector	MC4 compatible	

Load Capacity

Maximum Static Load on the Front	5400Pa
Maximum Static Load on Rear Side	2400Pa

Electrical Data (STC: 1000W/m², 25 °C, AM 1.5)

Power	45W
Power/m ² (W/m ²)	139W/m ²
Voltage at Open Circuit (Voc)	8.35V
Voltage at Max Power (Vmp)	7.21V
Current at Short Circuit (Isc)	6.63A
Current at Max Power (Imp)	6.24A
Power Sorting Tolerance	0/+3W

Operation Conditions

Temperature Range	-40°C ~+85°C
Maximum System Voltage	1500V
Maximum Series Fuse Rating	25A
The Rated Operating Temperature	45±2°C
Bifaciality Coefficients	TOPCon: φvoc=99±1% φIsc=80±5% φPmax=80±5%
Fire-resistant Class	A
Protection Class	II

Temperature Coefficient

Isc TP	+ 0.046%/°C
Voc TP	- 0.26%/°C
Pmp TP	- 0.31%/°C

*within a tolerance of 2 mm for length, width and thickness.

GOODWE PV BUILDING MATERIALS

Solarise Every Building



 LinkedIn



 Youtube



 Facebook



 Ins



 Little Red Book



 GoodWe



GOODWE TECHNOLOGIES CO., LTD



No. 93 Tayuan Road Suzhou, 215011, China



info.pybm@goodwe.com



en.pybm.com